



Intelligent Automation

TUVQIPÁ Áŷ^ { ææŷ äÄŷ&dæÖŷÄŷ•cŷ •

simply the first



Rodless Cylinders
@bYUf; i JXys
9YWFJW5VH Uhcfs
A chcfğ Gearheads
Air Cylinders
DbYi a UhWJ Uj Yg
: F@ž FittingsžHi VY
Vacuum Equipment



Air preparation units

Condensate management airfit drain
G1/2

Dimensions

Drain valve
DV-1/4i, DV-1/2i
– Assembly kit

Float-controlled drain valve for automatic drainage of condensate from industrial filters used in compressed air technology.

For installation in all plastic and metal reservoirs. Fitted in the HOERBIGER A25 and A50 series.

Delivery includes:

Drain valve, with o-ring and locking device if required

Drain valve DV-1/2e

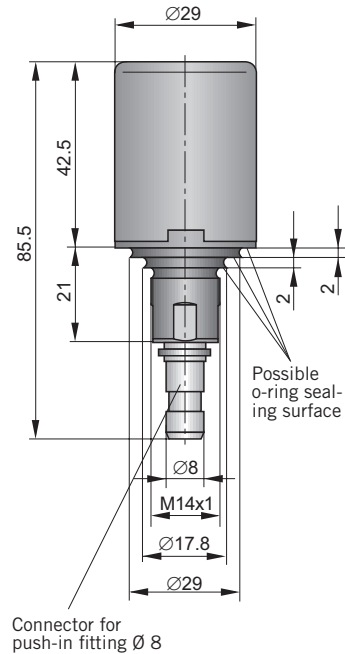
Float-controlled drain valve for automatic drainage of condensate from compressed air lines and compressors. Tackles highly polluted condensate without problems.

Installation instruction:

Generally at the lowest point, where condensate and oil collect.

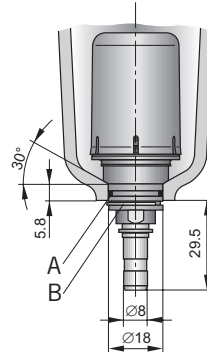


Type: DV-1/2i



Type: DV-1/2i

– for series airfit A25, A50

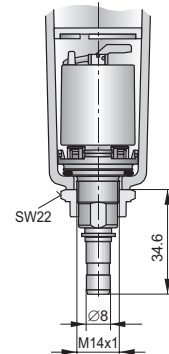


Installation instruction DV-1/2i

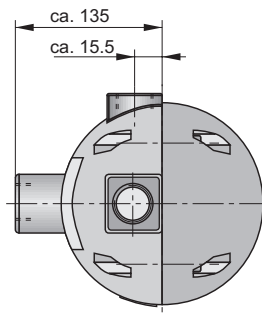
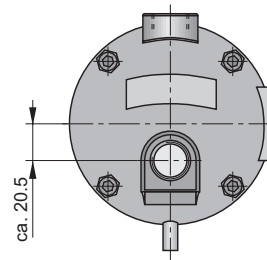
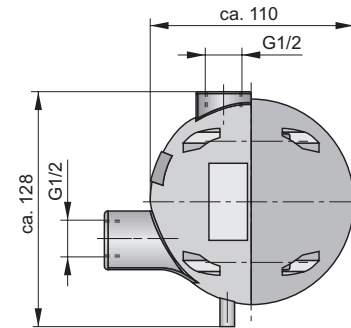
1. Lightly grease seal ring A before assembly.
2. Insert the drain valve into the bowl from the top.
3. Secure the drain valve outside the bowl with circlip B.

Type: DV-1/4i

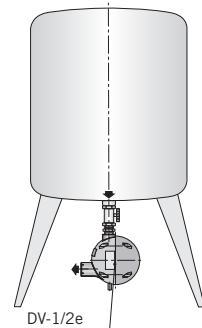
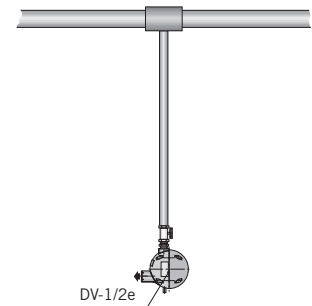
– for series airfit swing



Type: DV-1/2e

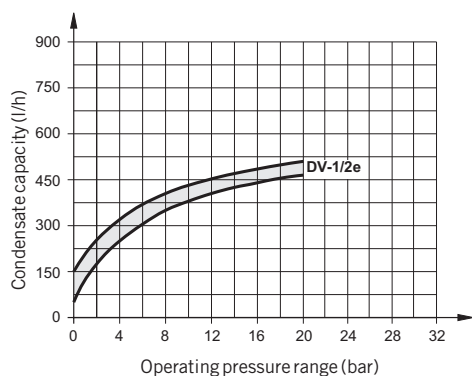


Installation instruction Type: DV-1/2e

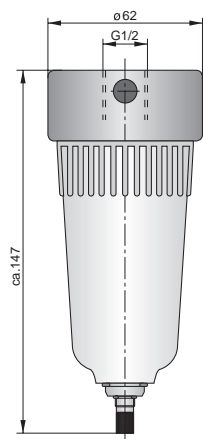


Dimensions in mm

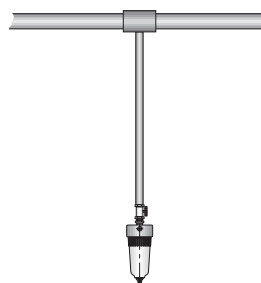
Condensate capacity – Type: DV-1/2e



Type: DV-1/2e2



Installation instruction Type: DV-1/2e2



Air preparation units

Condensate management airfit drain G1/2

Dimensions

Drain valve DV-1/2e2

Float-type drain valve for fully automatic drainage of condensate from compressed air lines – for external mounting

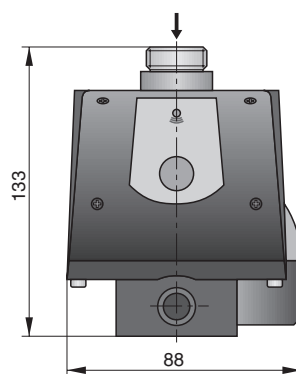
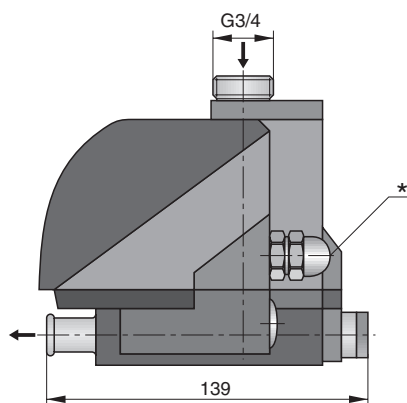
Installation instruction:
Generally at the lowest point, where condensate and oil collect.

Float controlled drain valve, electronically actuated DV-3/4

- For external application
- Level dependant control
- Universal voltage for international use
- Version for aggressive media

Installation instruction:
Please note the instruction manual. Highly polluted condensate requires the use of a strainer (particle separation).

Type: DV-3/4e



* Electronic connection PG9

Dimensions in mm



... and a comprehensive range of accessories
– in all sizes and with many options



Float-type AutoDrain



TimerDrain, Strainer, Ball Valve



Air Tank



Characteristics Common to All airfit A50 Units

Filter-Water-Separator

Weight (mass)	kg	A50F-1 1/2	A50F-2
		5.50	5.25

Pressure Regulator

Weight (mass)	kg	A50R-1 1/2	A50R-2
Port sizes	G	1 1/2	2
Maximum flow rate	Q		
	l/min	>40000	>40000
	m³/h	>2400	>2400
Operating pressure range, inlet	p _{1 min} bar	0	0
	p _{1 max} bar	17.5	17.5
Operating pressure range, outlet	p _{2 min} bar	0	0
	p _{2 max} bar	8(16)	8(16)

Micromist Lubricator

Port sizes	G	EL-25	EL-50
Weight (mass)	kg	10	18
Recommended flow rate	Q _{min} l/min	100	200
	Q _{max} l/min	5500	17000
Operating pressure range	p _{max} bar	10	10

Type: DV-1/2i automatic drain



airfit A04R 4 and 6 mm
pressure regulator for panel
mounting

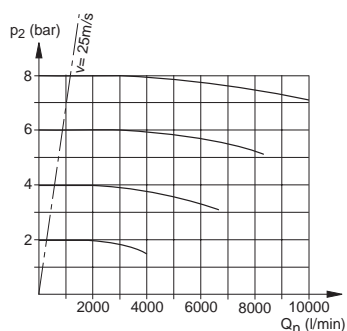


- minimum size
- high flow rates
- push-in connections
- DIN rail mounting

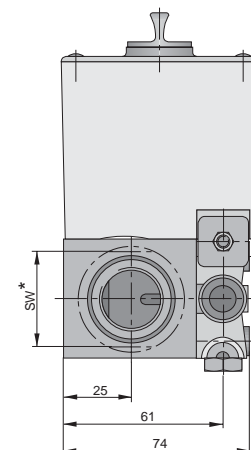
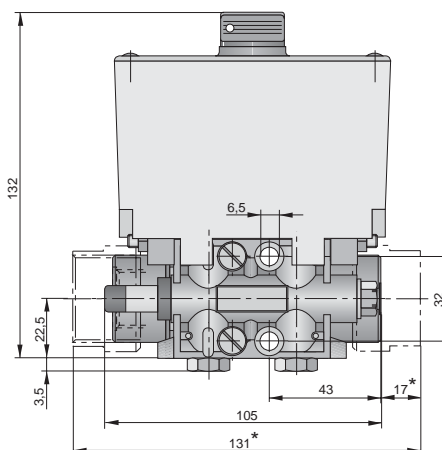
Injection Lubricator Combination G1/4-G1

Flow Characteristics: Type LUBI-08

Version with airflow sensor



Port size		G1/4	G3/8	G1/2	G3/4	G1
Weight (mass)	kg	0.65	0.65	0.65	0.75	0.80
Operating pressure range	p _{min} bar	3	3	3	3	3
	p _{max} bar	16	16	16	16	16
Recommended flow rate	Q _n l/min	550	850	1900	3500	5000
	m³/h	33	51	114	210	300



* only for LUBI-20 SW = 36
LUBI-25 SW = 41